



US Drives Inc.  
2221 Niagara Falls Boulevard  
P.O. Box 281  
Niagara Falls, NY 14304-0281  
Tel: (716) 731-1606 Fax: (716) 731-1524  
Visit us at [www.usdrivesinc.com](http://www.usdrivesinc.com)

## Phoenix AC Drive with Bypass

Every Phoenix AC Drive can be equipped with a factory installed bypass package. Bypass capability is often specified for fans, pumps, and other critical applications that require redundant AC Motor control for continuous operation under all conditions. Phoenix Bypass packages are factory pre-wired to simplify installation, eliminate field wiring, and minimize start-up time.

Every Phoenix Bypass includes:

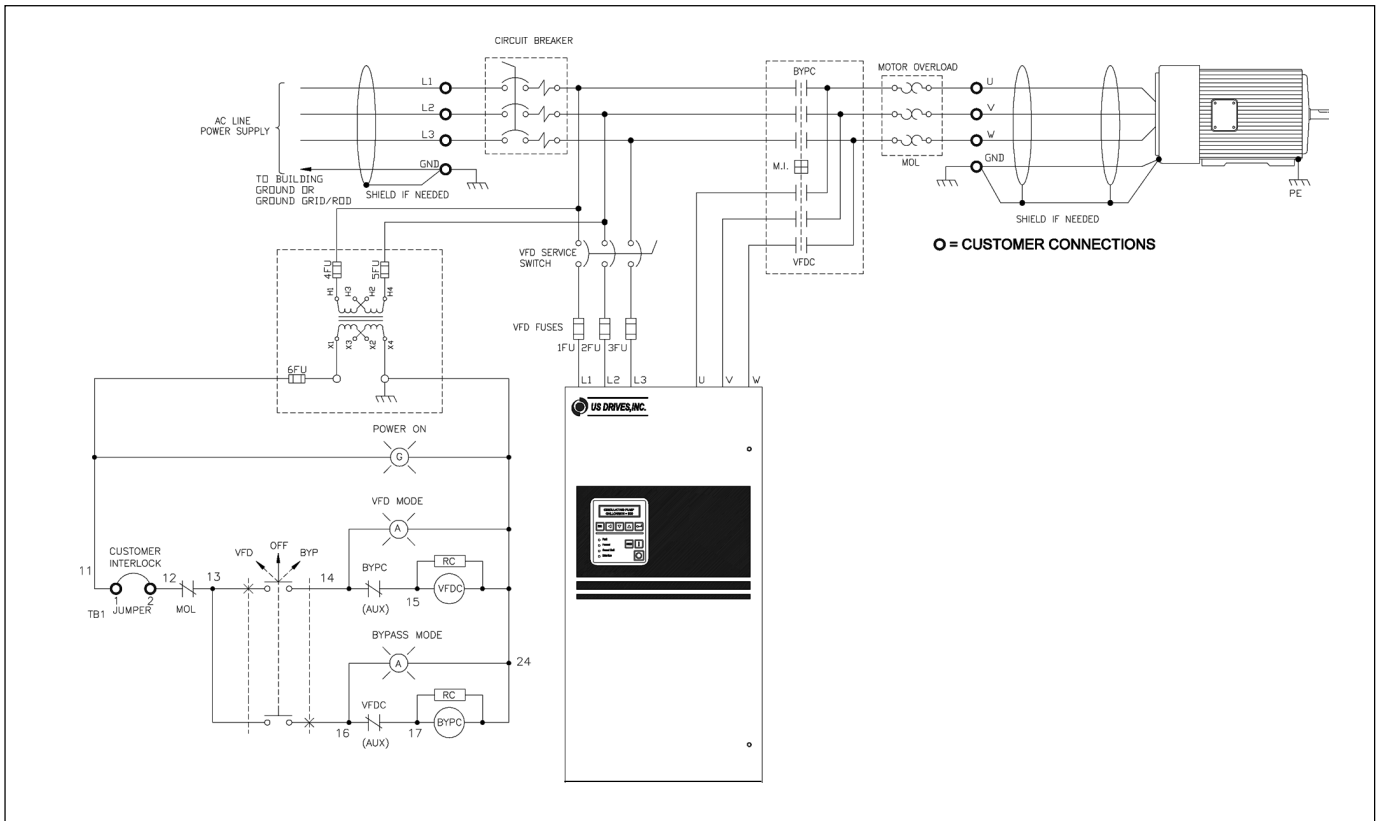
- *INPUT CIRCUIT BREAKER WITH DOOR INTERLOCK.*
- *VFD AND BYPASS CONTACTORS.*
- *VFD SERVICE (DISCONNECT) SWITCH.*
- *MOTOR THERMAL OVERLOAD RELAY.*
- *FUSED CONTROL POWER TRANSFORMER.*
- *DOOR-MOUNTED OPERATOR DEVICES.*
  - *DRIVE - OFF - BYPASS SELECTOR SWITCH.*
  - *HAND - OFF - AUTO SELECTOR SWITCH.*
  - *POWER ON PILOT LIGHT.*
  - *VFD MODE PILOT LIGHT.*
  - *BYPASS MODE PILOT LIGHT.*
  - *OPERATOR KEYPAD WITH ENGLISH LANGUAGE DISPLAY*
  - *FOR READOUT AND MANUAL SPEED CONTROL.*

The Phoenix Bypass provides better protection than most competitive bypass packages. Our VFD and Bypass Contactors are both electrically and mechanically interlocked to insure proper operation. Competitive Bypass packages typically include electrical interlocks only. Our Bypass package includes a VFD Service Switch (Disconnect). This allows maintenance personnel to completely isolate the VFD from the AC Power Line in Bypass Mode. Other Bypass Packages typically include no power isolation, or isolation by AC Contactor only.



**THREE YEAR WARRANTY**

**MADE IN USA**



PHOENIX AC DRIVE WITH BYPASS								
Input Voltage	Motor HP		Nema 1			Nema 12		
	High Overload Capacity (CT) <sup>2</sup>	Normal Overload Capacity (VT) <sup>3</sup>	Approximate Dimensions <sup>1</sup> (HxWxD)	Mounting	Approximate Weight	Approximate Dimensions <sup>1</sup> (HxWxD)	Mounting	Approximate Weight
200 - 250 VAC (208/230/240)	3-7.5	5-10	34.02" x 9.0" x 10.9"	Wall	79 Lbs.	34.02" x 9.0" x 10.9"	Wall	85 Lbs.
	10-20	15-20	34.02" x 9.0" x 10.9"	Wall	79 Lbs.	34.02" x 9.0" x 10.9"	Wall	85 Lbs.
	25-30	25-30	38.4"x11.6"x11.1"	Wall	120 Lbs.	38.4"x11.6"x11.1"	Wall	125 Lbs.
	40-100	40-100	65" x 20.1" x 13.5"	Wall	250 Lbs.	60" x 36" x 16"	Wall	450 Lbs.
	125-200	125-200	72" x 72" x 23.5"	Floor	1400 Lbs.	72" x 72" x 23.5"	Floor	1450 Lbs.
380 - 500 VAC (380/400/415/480)	250	250	72" x 72" x 23.5"	Floor	1700 Lbs.	72" x 72" x 23.5"	Floor	1750 Lbs.
	5-15	7.5-20	34.02" x 9.0" x 10.9"	Wall	79 Lbs.	34.02" x 9.0" x 10.9"	Wall	85 Lbs.
	20-40	25-40	34.02" x 9.0" x 10.9"	Wall	79 Lbs.	34.02" x 9.0" x 10.9"	Wall	85 Lbs.
	50-60	50-60	38.4"x11.6"x11.1"	Wall	120 Lbs.	38.4"x11.6"x11.1"	Wall	125 Lbs.
	75-200	75-200	65" x 20.1" x 13.5"	Wall	250 Lbs.	60" x 36" x 16"	Wall	450 Lbs.
525 - 600 VAC (525/575/600)	250-400	250-400	72" x 72" x 23.5"	Floor	1400 Lbs.	72" x 72" x 23.5"	Floor	1450 Lbs.
	450-500	450-500	72" x 72" x 23.5"	Floor	1700 Lbs.	72" x 72" x 23.5"	Floor	1750 Lbs.
	5-15	7.5-20	24" x 24" x 14.2"	Wall	85 Lbs.	24" x 24" x 14.2"	Wall	85 Lbs.
	20-40	25-40	24" x 30" x 14.2"	Wall	95 Lbs.	24" x 30" x 14.2"	Wall	95 Lbs.
	50-75	50-75	38.4"x11.6"x11.1"	Wall	120 Lbs.	38.4"x11.6"x11.1"	Wall	125 Lbs.
525 - 600 VAC (525/575/600)	100-200	100-200	65" x 20.1" x 13.5"	Wall	250 Lbs.	60" x 36" x 16"	Wall	450 Lbs.
	250-400	250-400	72" x 72" x 23.5"	Floor	1400 Lbs.	72" x 72" x 23.5"	Floor	1450 Lbs.
	450-600	450-600	72" x 72" x 23.5"	Floor	1700 Lbs.	72" x 72" x 23.5"	Floor	1750 Lbs.

(1) All Dimensions in Inches (HxWxD)  
 (2) High Overload Capacity Drives produce 150% of Rated Drive Output Current for 1 minutes  
 (3) Normal Overload Capacity Drives produce 120% of Rated Drive Output Current for 1 minutes  
 (4) Consult Factory for Higher HP Ratings and Phoenix Clean Power Dimensions