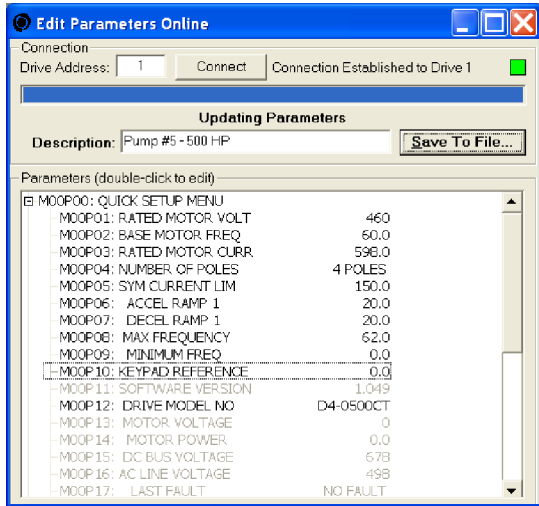


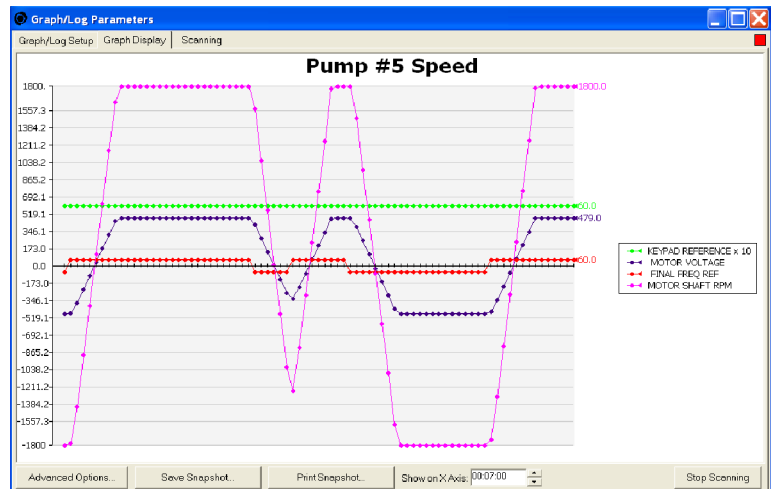
DRIVEMASTER 6.52 DRIVE CONFIGURATION SOFTWARE

Drivemaster 6.52 is a Windows based program designed to make drive set-up, record keeping, and troubleshooting easy. Drive parameters can be extracted from a drive, reviewed, modified, printed, stored on disk, reloaded back into the same drive, or copied to another drive. Data Logging and Graphing of drive parameters is also possible. Offline and Online Editing is supported.

Drivemaster 6.52 supports both Modbus Serial Communications and Ethernet / Modbus TCP Communications.



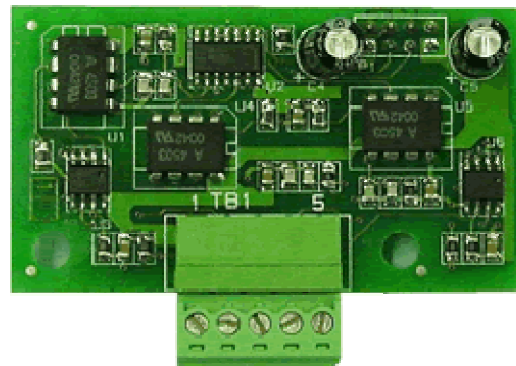
Edit and Save Drive Parameters



Log and Graph Drive Parameters



**USB/RS - 485
Communications Interface with Cable**



Serial Communications Card

With Drivemaster 6.52 you can also.....

Parameter File Printout

Report Printed on 03-13-2006 at 14:44:30
 File: C:\Program Files\Drive Master\Pump #5 US6
 Description: Pump #5 - 500 HP

Parameter Name	Parameter Value	Parameter Name	Parameter Value
M00P01: QUICK-SE-UP MENU	200	M00P05: ACCEL RAMP 1	20.0
M00P01: RATED MOTOR VOLT	480	M00P06: DECEL RAMP 1	20.0
M00P02: BASE MOTOR FREQ	60.0	M00P06: LOG ACCEL RAMP	60.0
M00P01: RATED MOTOR CURR	500.0	M00P06: LOG DECEL RAMP	60.0

File Comparison Report

Printed on 03-13-2006 at 14:40:04
 File #1: C:\Program Files\Drive Master\Pump #5 US6
 File #1 Description: Pump #5 - 500 HP
 File #2: C:\Program Files\Drive Master\Default Parameter Files\D4-6500CT.US6
 File #2 Description: Phoenix DX AC Drive Default Parameters D4-6500CT

Name of Parameter:	File 1 Value:	File 2 Value:
M00P14: M00P01: RATED MOTOR VOLT	480	480
M00P15: M00P02: BASE MOTOR FREQ	60.0	60.0
M00P16: M00P03: SYM CURRENT LIM	150.0	149.9
M00P17: M00P04: ACCEL RAMP 1	20.0	60.0
M00P18: M00P05: DECEL RAMP 1	20.0	60.0
M00P19: M00P06: MAX FREQUENCY	60.0	60.0
M00P20: M00P06: MAX FREQUENCY	60.0	60.0
M00P01: M00P06: ACCEL RAMP 1	20.0	60.0
M00P02: M00P06: ACCEL RAMP 1	20.0	60.0
M00P03: M00P06: ACCEL RAMP 1	20.0	60.0
M00P04: M00P06: ACCEL RAMP 1	20.0	60.0
M00P05: M00P06: ACCEL RAMP 1	20.0	60.0
M00P06: M00P06: ACCEL RAMP 1	20.0	60.0
M00P07: M00P06: ACCEL RAMP 1	20.0	60.0
M00P08: M00P06: ACCEL RAMP 1	20.0	60.0
M00P09: M00P06: ACCEL RAMP 1	20.0	60.0
M00P10: M00P06: ACCEL RAMP 1	20.0	60.0
M00P11: M00P06: ACCEL RAMP 1	20.0	60.0
M00P12: M00P06: ACCEL RAMP 1	20.0	60.0
M00P13: M00P06: ACCEL RAMP 1	20.0	60.0
M00P14: M00P06: ACCEL RAMP 1	20.0	60.0
M00P15: M00P06: ACCEL RAMP 1	20.0	60.0
M00P16: M00P06: ACCEL RAMP 1	20.0	60.0
M00P17: M00P06: ACCEL RAMP 1	20.0	60.0
M00P18: M00P06: ACCEL RAMP 1	20.0	60.0
M00P19: M00P06: ACCEL RAMP 1	20.0	60.0
M00P20: M00P06: ACCEL RAMP 1	20.0	60.0
M00P01: M00P06: ACCEL RAMP 1	20.0	60.0
M00P02: M00P06: ACCEL RAMP 1	20.0	60.0
M00P03: M00P06: ACCEL RAMP 1	20.0	60.0
M00P04: M00P06: ACCEL RAMP 1	20.0	60.0
M00P05: M00P06: ACCEL RAMP 1	20.0	60.0
M00P06: M00P06: ACCEL RAMP 1	20.0	60.0
M00P07: M00P06: ACCEL RAMP 1	20.0	60.0
M00P08: M00P06: ACCEL RAMP 1	20.0	60.0
M00P09: M00P06: ACCEL RAMP 1	20.0	60.0
M00P10: M00P06: ACCEL RAMP 1	20.0	60.0
M00P11: M00P06: ACCEL RAMP 1	20.0	60.0
M00P12: M00P06: ACCEL RAMP 1	20.0	60.0
M00P13: M00P06: ACCEL RAMP 1	20.0	60.0
M00P14: M00P06: ACCEL RAMP 1	20.0	60.0
M00P15: M00P06: ACCEL RAMP 1	20.0	60.0
M00P16: M00P06: ACCEL RAMP 1	20.0	60.0
M00P17: M00P06: ACCEL RAMP 1	20.0	60.0
M00P18: M00P06: ACCEL RAMP 1	20.0	60.0
M00P19: M00P06: ACCEL RAMP 1	20.0	60.0
M00P20: M00P06: ACCEL RAMP 1	20.0	60.0

Compare Files and Print Drive Set-up Information

Quick Setup Menu Customization Wizard

Upload Parameter Data | Select Menu Parameters | Extra Options | Preview

This display shows a preview of what your quick menu will look like on the actual drive keypad. If you are still connected to the drive, you may check "Show actual drive values" to read the actual values and use them in this preview.

Gals Per Min

M00P19 0318.1 = M00P03 x 6.361

Click Finish or Send to Drive to send this menu configuration to the drive. If you are working offline, or have multiple drives you wish to apply the same Quick Setup Menu to, you may click "Save to File" to create a parameter file that will download these menu settings to any compatible drive. You can also click "Back" to change your settings.

Show actual drive values in Preview

Customize the Drive Keypad Display

Graphing Parameters

Graphing Setup | Graph Settings | Connected

Drive Address: T | Overview

Log Filename: graph

Scan Period: 01:00 | Refresh Data

Ch Name	Value	Units	Color	Gain
M00P16: 48-Phase Reference	630	Graph 4 Log	#16	1
M00P17: Motor Voltage	470	Graph 4 Log	#17	1
M00P18: Final Freq Ref	60.0	Graph 4 Log	#18	1
M00P19: Motor's Output Freq	60.0	Graph 4 Log	#19	1

Remove All | Start Logging

Date		Time	M00P14	M00P15	M00P16	M00P18	M00P19	M00P20
*** Log Opened: 13:38:20 01-27-2006								
01-27-2006	13:38:52		0.5	635	457	6.5	60.0	1800
01-27-2006	13:39:26		0.5	632	457	6.5	60.0	1800
01-27-2006	13:40:00		0.6	633	457	6.5	-60.0	-1800
01-27-2006	13:40:34		0.6	633	457	6.5	-60.0	-1800
01-27-2006	13:41:08		0.6	632	457	6.4	-60.0	-1800
01-27-2006	13:41:41		0.3	631	457	9.7	60.0	837
01-27-2006	13:42:15		0.5	634	457	6.5	60.0	1800
01-27-2006	13:42:49		0.5	631	457	6.4	60.0	1800
01-27-2006	13:43:22		0.6	633	457	7.7	-60.0	-804
01-27-2006	13:43:56		0.5	628	456	6.4	-60.0	-1800
*** Log Closed: 13:44:27 01-27-2006								
*** Log Opened: 13:29:18 02-02-2006								

Scan and Log Drive Parameters

Features:

- Use with Phoenix DX (Open Loop) or Phoenix EX (Closed Loop) AC Vector Drives
- View and modify drive parameters from a simple to use computer interface.
- Connect via Serial Communication (RS-232/422/485) or Ethernet Communication
- Supports both On-Line and Off-Line editing of all drive parameters.
- Select up to 25 specific drive parameters for Logging, Graphing, Display, and On-Line Editing.
- Retrieve all drive parameters from a new or existing US Drives product.
- Save all retrieved drive parameters to your computer's hard disc or other media.
- Load drive parameter files stored on your computer to a new or existing US Drives product.
- Data Logging feature periodically scans and stores up to 25 different drive parameters
 - Scan period is adjustable (Hr, Min, Sec) for high speed or long term applications.
 - Data files are easily imported to Microsoft Excel for future Printing, Graphing, and Analyzing.
- Graphing feature allows you to create real time plots of up to 25 different drive parameters
- Easily configure drives of different horsepower ratings with the same operating sequence.
- Compare a drive's parameter set against that drive's default parameter set.
- Compare a drive's parameter set to a previously saved set of drive parameters.
- Print out a list of all drive parameters and save a paper copy for your records.
- Print out a list of parameter differences between two drives or two saved file sets.
- Easily scale and format the drive's Keypad to display parameters in real world units (GPM, PSI, etc.)
- Easily modify the drive's Keypad to show parameters of specific interest in your application.