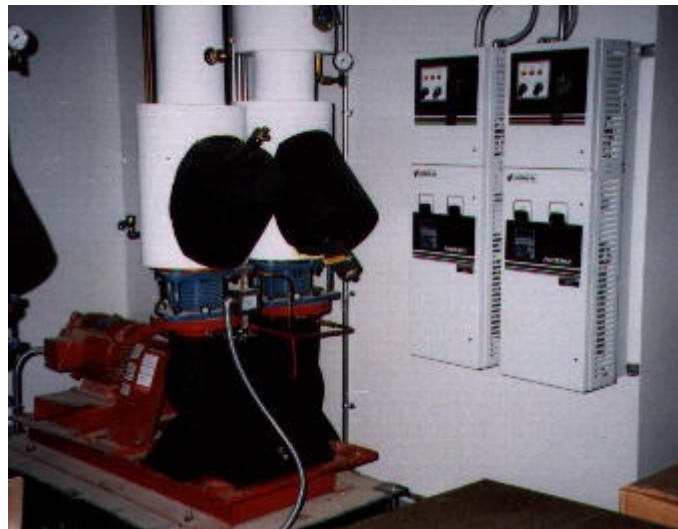


## **SUNOCO CHEMICAL RESEARCH FACILITY**

Heating Ventilating and Air Conditioning (HVAC) is a very common application for AC drives. HVAC Systems are designed to perform during peak load conditions that exist less than 5% of the year. Various modulation methods are used to control system flow such as Inlet Guide Vanes and Outlet Dampers on Fans and Throttling Valves on Circulation Pumps. These control devices regulate flow and reduce energy consumption, but they are not as energy efficient as flow control using a Variable Frequency Drive from US Drives.

When the Sonoco Chemical Research Facility in Pittsburgh, PA was built, US drives was chosen to supply the AC Drives used on the building's Air Conditioning and Process Cooling System. Twenty-one AC drives are installed on Air Handlers and Chilled Water Pumps. All drives interface to a Landis & Staefa Building Automation System. US Drives was chosen because of our excellent price, compact size, and high reliability.



These twenty-one AC Drives have been in operation twenty four hours a day, seven days a week for almost five years without a problem.